



SWISSPEARL ARCHITECTURE 12

International Edition - High Profile Buildings

SWISSPEARL®

Importanne Centre, Sarajevo, Bosnia/Herzegovina

BRIDGING THE GAP



In the Bosnian city of Sarajevo, architects from the local *studio non stop* recently created a multifunctional centre. Compartmentalised into eight distinctive tower units, it blends into the historical urban structure and forms a link between the traditional and the modern city.





“IMPORTANTNE CENTRE LIES ON THE BORDER BETWEEN THE HISTORICAL AND MODERN PARTS OF SARAJEVO AND OUR INTENTION WAS TO CREATE A CONNECTING ELEMENT.” STUDIO NON STOP

Mending the tears in the urban fabric of European cities is one of the tasks of today's architects. Many an urban landscape, which had grown slowly over the centuries, experienced a break during the modernist movement of the 20th century. The urge to conquer 'the green' has also left sprawling semi-urban landscapes around the core cities, creating gaps between the centres and their peripheral neighbourhoods. The Bosnian architectural office, studio non stop, have come up with their own suggestions on how to bridge one of these gaps in the Marijin dvor neighbourhood in Sarajevo. Their multifunctional Importanne Centre features characteristics from both traditional perimeter blocks and the open architecture proclaimed by the modernist movement and widely adopted during the post-war years.

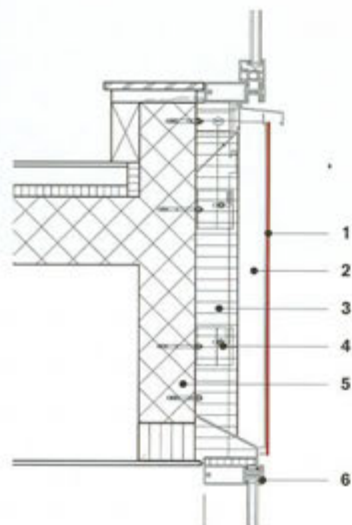
Instead of placing a single superstructure on the site, studio non stop decided to create a compact block of eight towers that looks as if its elements were built at separate times and by different architects. This effect is achieved by different heights, set-back connections be-

tween the units as well as different geometrical rhythms and colours of the façade panels. "We chose Swisspearl for its natural structure and optic", says Sanja Galic-Grozdanic, one of the company's founders and architects. "We wanted to create a modern equivalent to the façades of the 19th century buildings in this neighbourhood. The glass elements, in contrast, refer to the steel and glass architecture of the 20th century."

Not only the façades of the new centre are variegated, its contents are as well. In addition to residential and office units of different sizes and layouts, Importanne Centre houses a hotel and a large shopping mall. Seen from a distance, the centre appears as a little city with its own skyline, an impression that is enhanced by the irregularly placed recesses that look like natural imperfections in the urban fabric. *Mirko Beetschen*

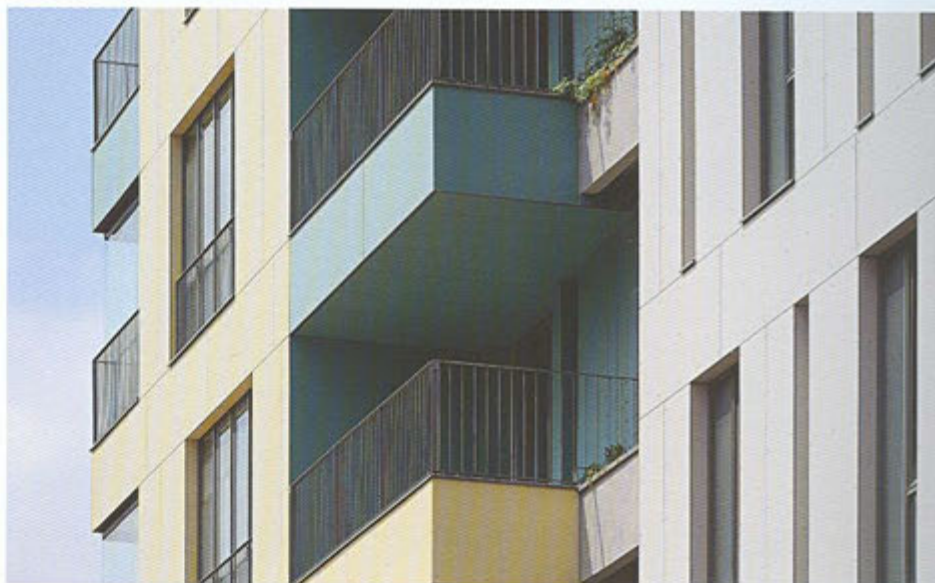
"BY CHOOSING SWISSPEARL WITH ITS NATURAL SURFACE STRUCTURE, WE INTENDED TO REINTERPRET THE APPEARANCE OF THE FAÇADES FROM THE NEARBY 19TH CENTURY BUILDINGS." STUDIO NON STOP

Instead of one giant block, studio non stop has shaped the multi-functional Importantne Centre as if it were made up of eight different parts, seemingly grown together over time.



Vertical section 1:20

- 1 Swisspearl® cement composite panel 8 mm
- 2 Ventilation cavity
- 3 Thermal insulation
- 4 Sub framing
- 5 Concrete
- 6 Aluminium window



Location Zmaja od Bosne 7, Sarajevo, Bosnia/Herzegovina

Client Teleoptic doo, Sarajevo

Architects Studio non stop, Sarajevo

Building period 2008–2010

Façade construction Hano doo, Sarajevo

Façade material SWISSPEARL® CARAT Onyx 7090, Amber 7082, Jade 7052, Black Opal 7020 and Sapphire 7060

