



new European architecture

A10

88001
22 20



#15
MAY/JUN 2007

€7.50

£ 5.50 / CHF 12.00 / ADK 6.500 / KRW 90.000

Start

- Metro stations, Budapest
- School, Rotterdam
- Redevelopment of tobacco factory grounds, Ljubljana
- Photovoltaic architectural system, Portugal
- Czech National Library, Prague

Ready

- Tall canopy, Edinburgh
- Public library, Grosuplje
- Apartment, Olomouc
- House, Madrid
- Police station, Paris
- Library, Rome
- Apartment building, Bjalasnica
- Housing, Dublin
- Heating plant, Bressanone
- Community centre, Corpataux
- Office building, Athens
- Shop interior, Zagreb

&

- Interview: the political architecture of Andres Jaque
- Zaragoza 2008: before, during and after the Expo
- Architectural tour guide: Athens' post-Olympic architecture
- Materia's view on textiles
- Out of obscurity: Prior Store and Kyjev Hotel, Bratislava

Section: Glass eyes

MOSCOW'S MEMORIALS

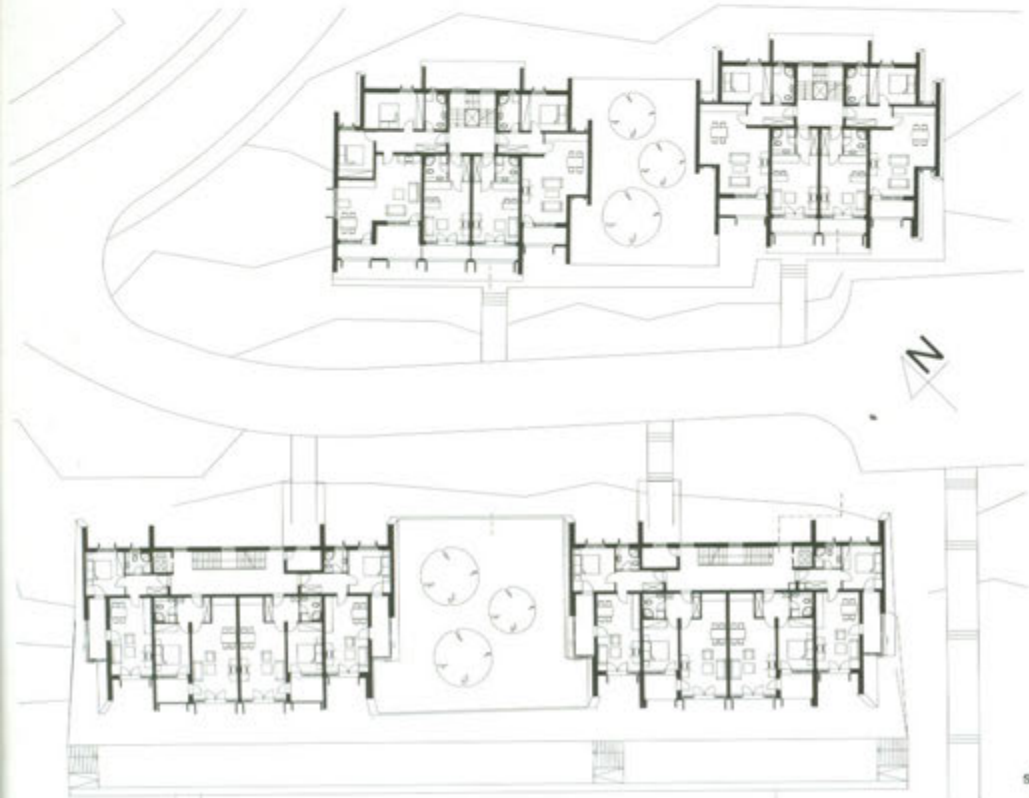


The two blocks were shifted slightly to ensure views for both.

Apartment building, Bjelašnica

Studio Non-Stop break with standard alpine architecture by borrowing ingredients from the surrounding mountains.

■ BOSNIA AND HERZEGOVINA — TEXT: ELSA TURKUSIC, PHOTOGRAPHY: MUNEVER SALIHOVIC & BOJAN MARJANOVIC



← Floor plan of the two blocks, separated by a local road

During the 1984 Winter Olympics, Mount Bjelašnica, a permanently snow-capped mountain twenty-five kilometres southwest of Sarajevo, was the venue for the men's alpine skiing events. The ski resort was mostly destroyed during the recent war and the area is badly in need of a makeover. Three years ago, an urban regeneration project for Mount Bjelašnica was adopted; it envisaged the construction of holiday apartments in the area known as Babin Do. At the time, then, the ski resort has become a construction site and the scenery of Babin Do has changed with every visit. The new building panorama is made up of cliché objects, which either imitate or paste the alpine ambience or completely deny it.

One exception is Union Olympic Apartments, designed by Studio Non-Stop. With its strong, irregular form and dark green and white colours, the complex stands out from its built environment but is completely assimilated with the surrounding landscape. The architects took the local topography and colours as their starting points and this is reflected in the finished building, which conjures associations with the silhouette of the mountain peak. The traditional village mountain house provided inspiration for the functional organization of the complex. The materials used – dark green zinc, pine wood and lime mortar – establish a coherent relation with the surrounding landscape, echoing the colours of the rocks, snow and evergreen trees. Indeed, the architects' choice of materials is the building's most important feature, underscoring rather than negating the natural environment.

The building is composed of two identical sections. As they are divided by a local road, they constitute a unique architectural entity in that they are connected by three underground levels – a further adaptation to the local topography. The underground provides space for additional programme and enhances the quality of the complex. The lowest two levels contain public spaces: garages, shops, restaurants and stores for ski equipment. They are vertically connected with the apartment sections – the upper one containing 36 units over five levels, the lower one 40 units over four levels.



↓ The connecting underground levels appear to be part of the facade of the lower building.



↑ Rear facade ↓ Apartment interior



(Apartment building, Belašnica)

Both apartment sections are trapezoid, positioned symmetrically in relation to a lower middle level. They are located along an east-west axis, with the main facades facing south toward Belašnica and the main ski piste. In order to provide the apartments in the upper section with adequate daylight and good views, the two sections were shifted horizontally in relation to each other. Now all apartments receive plenty of sun. Movable wooden panels in front of the large windows or balconies act not only as sun screens, but also as an intermediary between the occupants and the scenery, especially when they are on the balconies or in their kitchen, living room or bedrooms. The movement of the wooden panels gives the building a dynamic character.

The lower basement floors, visible on the south elevation of the lower section, are strongly outlined by white frames. They look like the sturdy base of the building. The facade of the lowest level, on which the white frames rest, is clad in local limestone. It faces the traffic road, from which a staircase leads to the terrace of the basement level above. The zinc cladding continues in the sloping end facades, hiding the prominent white parts of the apartments with their classically dimensioned windows.

Studio Non-Stop, who have a reputation for simple, minimalist solutions, designed the Union Olympic Apartments from an analysis of location, use and flexibility. Their choice of a glazed south facade, which contrasts with the more typically closed facades of alpine buildings, contributes to the elegance and the quality of the project's interior. Future plans for the area envisage more buildings with public functions. It can be hoped that exceptional buildings like this one will become a rule. ←

UNIONINVEST OLYMPIC APARTMENTS, 2004-2006

Architect: Studio Non-Stop (Sanja Galić Crozdanović and Igor Crozdanović with Edin Avdićbegović, Hasnija Kazić, Jasmina Topcagić)
 Client: Unioninvest d.d. Sarajevo
 Address: Babin Do, Belašnica

